



PIRNAR

PIVOT

E N T R A N C E



MAKE IT PERSONAL

MAKE IT YOURS



PIRNAR.

PIRNAR'S

HERITAGE

SINCE 1968

We take pride in our heritage. From our initial steps in the family workshop onward, we are driven by a passion for creation and a commitment to excellence in design and craftsmanship, which has been passed down through generations. We continuously enhance our expertise and combine it with modern technologies. Strong roots maintain our connection to tradition, while courage and boldness push the boundaries of possibility, guiding us to new successes. With a clear vision and an innovative approach, we exceed expectations and set new milestones globally in the realm of building furnishings.



PIRNAR

PIVOT

A FREEDOM OF DESIGN &
ARCHITECTURAL EXPRESSION

The Pirnar Pivot entrance line redefines the concept of entryways, melding innovation with elegance to create an unparalleled opening experience. Distinguished as the only pivot doors featuring unique carbon construction CarbonCore, these masterpieces offer remarkable strength, superior sealing Magnet WeatherSeal, and exceptional stability, ensuring outstanding performance in any climate or geographical location.

Offering extraordinary durability and dimensions, Pirnar Pivot presents a canvas for personalization, allowing the unique styles of homeowners to come to life. The elegant rotation of the door around the vertical axis not only enhances the exterior but also sets a captivating tone for the home's interior.

Enhancements like SmartLux ambient lighting create inviting atmospheres, while advanced control options, including the SecuroSmart finger scanner and SecuroSmart KeyPad via the Pirnar mobile app, provide modern convenience and security.

**TAILOR-MADE
ENTRANCES**
BASED ON INSPIRATIONAL
MODELS

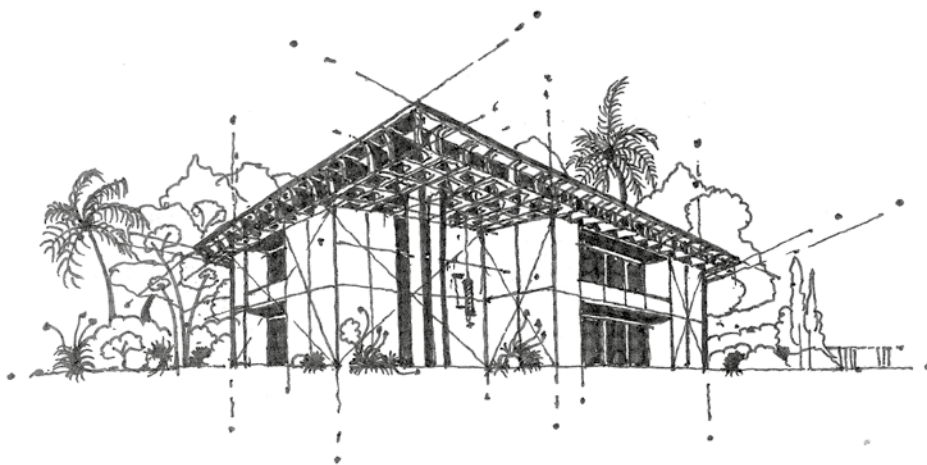
The pivot entrances are meticulously crafted to suit any environment or climate, drawing inspiration from a variety of models we develop daily. Each foundational design features standard horizontal divisions within the door leaf. Furthermore, each model can be enhanced with diverse dimensions and combinations of materials, colours, or cutting-edge accessories.



INSPIRATION

ANOKHI

Emerald coastlines KISS
SHORES OF *golden sand*, WHERE
ANCIENT TEMPLES WHISPER TALES OF THE
GLORIOUS PAST. *Modern villas*
NESTLED AMONG SWAYING PALMS BLEND
luxury WITH THE VIBRANT PULSE OF
timeless spirit.







MODEL

P_01



EXTERIOR

P_01



BASE MODEL INSPIRATION*

Dimension 2200 x 5100 mm / **Materials** Decorative tempered glass Night Sky Gloss / Aluminium Dune colour RAL 1017 Saffron Smooth (inside the handle) / **Recessed handle** GRIP 9633 with SmartLux illumination / **SecuroSmart** finger scanner with locking system OMNILOCK / **PVD** Golden Honey

HORIZONTAL DIVISIONS

Up to a height of 3000 mm without divisions /
From 3001 to 3800 mm with divisions at 2300 mm /
From 3801 mm also with divisions at 3040 mm

**For detailed technical information, please contact our sales representative.*



SELECTED MODEL INSPIRATIONS



Dimension 2345 x 6000 mm / **Materials** Sintered Stone Abu Dhabi White / Decorative tempered glass Night Storm Gloss (inside the handle) / **Recessed handle** GRIP 9633 with SmartLux illumination / **SecuroSmart** finger scanner with locking system OMNILOCK / **PVD** Volcanic Shadow



Dimension 1500 x 3200 mm / **Materials** Aluminium FS 9016 / Sintered Stone Black Obsession (inside the handle) / **Recessed handle** GRIP 9633 with SmartLux illumination / **SecuroSmart** finger scanner with locking system ARMO COMFORT ELECTRO / **PVD** Volcanic Shadow



Dimension 2200 x 2500 mm / **Materials** Decorative tempered glass African Mystery mat / Aluminium Decor Oiled Oak (inside the handle) / **Recessed handle** GRIP 9633 with SmartLux illumination / **SecuroSmart** finger scanner with locking system ARMO COMFORT ELECTRO / **PVD** Volcanic Shadow

PIRNAR PIVOT

INTERIOR

P_01



INTERIOR INSPIRATION

Materials Sintered Stone Iron Frost / Decorative tempered glass Night Sky
Gloss / **Handle** ANGULAR ALTUM with SmartLux illumination / **PVD** Golden
Honey (button & cylinder base FS 9005)

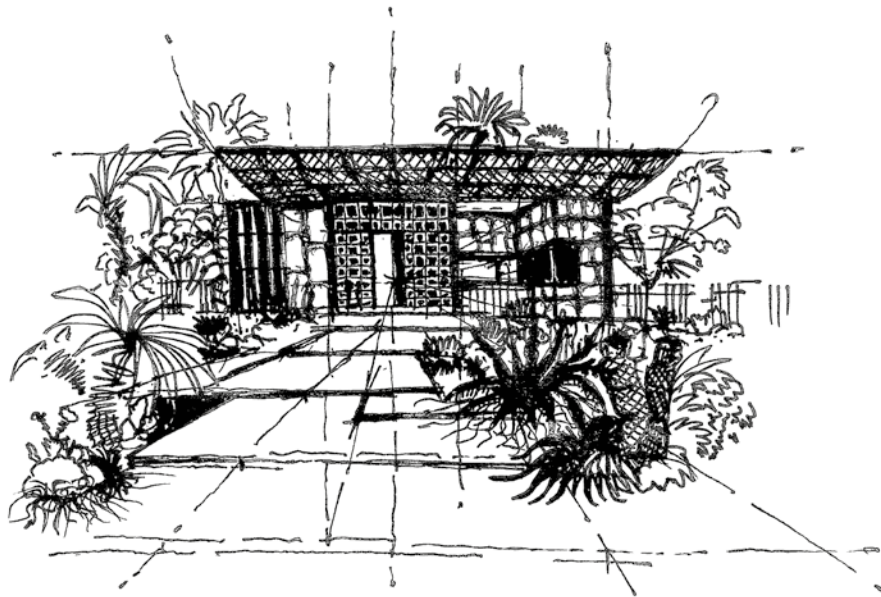




INSPIRATION

NOOR

HERE GOLDEN SANDS KISS THE CERULEAN
SEA, AND *luxury drapes*
EVERY CORNER IN A TAPESTRY WOVEN
FROM *dreams and daring*
ambition.







MODEL

P_02



EXTERIOR

P_02



BASE MODEL INSPIRATION*

Dimension 2400 x 6000 mm / **Materials** Sintered Stone Mont Blanc /
Decorative tempered glass Night Sky Gloss / Colour FS 9005 inside
the handle / **Recessed handle** GRIP 9634 with SmartLux illumination /
SecuroSmart finger scanner with locking system OMNILOCK /
PVD Volcanic Shadow

HORIZONTAL DIVISIONS

Up to a height of 3000 mm without divisions /
From 3001 to 3600 mm - 600 mm from the top /
Above 3601 mm at a height of 2960 mm

**For detailed technical information, please contact our sales representative.*



SELECTED MODEL INSPIRATIONS



Dimension 2300 x 5000 mm / **Materials** Sintered Stone Mont Blanc / Aluminium colour 90147 / **Recessed handle** GRIP 9634 with SmartLux illumination / **SecuroSmart** finger scanner with locking system OMNILOCK / **PVD** Volcanic Shadow



Dimension 1600 x 3400 mm / **Materials** Aluminium Decor Oiled Oak / Decorative tempered glass Dark Grey Gloss with 5-layer glass Pirnar Grey II (black printed motif) / Colour FS 9005 inside the handle / **Recessed handle** GRIP 9637 with application and SmartLux illumination / **SecuroSmart** finger scanner with locking system OMNILOCK / **PVD** Volcanic Shadow



Dimension 2200 x 2500 mm / **Material** Aluminium FS 9016 / **Recessed handle** GRIP 9637 with application and SmartLux illumination / **SecuroSmart** finger scanner with locking system ARMO COMFORT ELECTRO / **PVD** Golden Honey

PIRNAR PIVOT

INTERIOR

P_02



INTERIOR INSPIRATION

Materials Sintered Stone Mont Blanc / Decorative tempered glass
Night Sky Gloss / **Handle** ANGULAR ALTUM with SmartLux illumination /
PVD Golden Honey (button & cylinder base FS 9005)

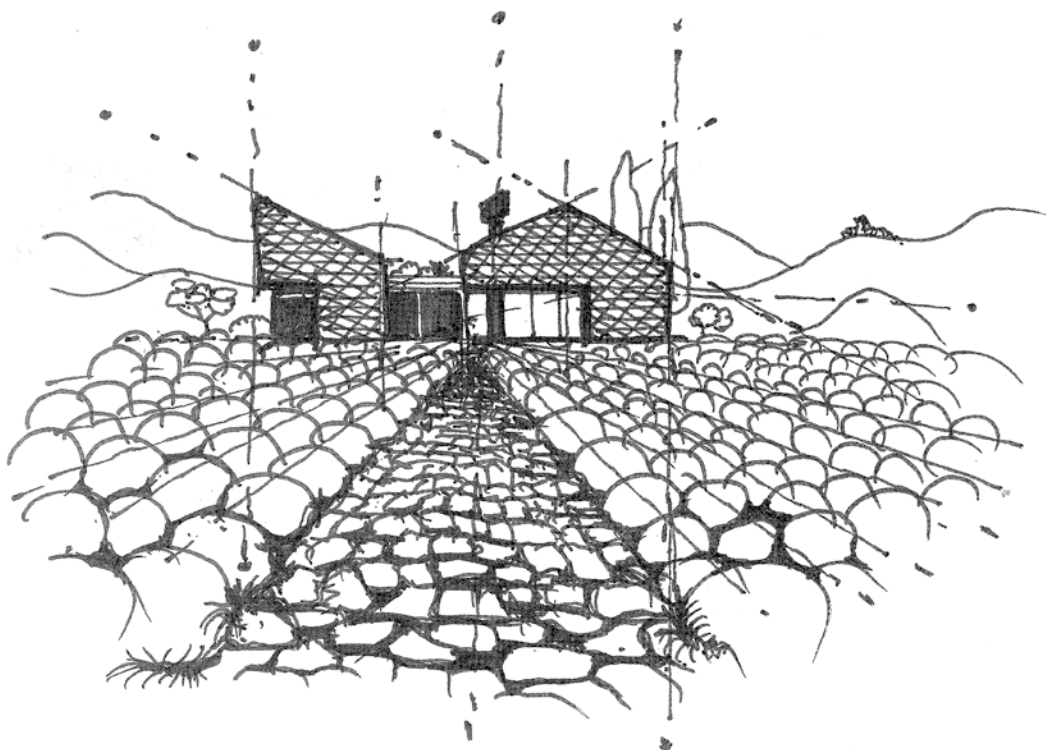




INSPIRATION

CHIARA

SUN-DRENCHED HILLS CRADLE *elegant villas*, WHERE TERRACOTTA ROOFTOPS AND *modern luxury* DANCE WITH *timeless charm*. CYPRESS TREES AND GROVES WEAVE A *tapestry of life*, INVITING THE SOUL TO LINGER IN THE *beauty of existence*.







MODEL

P_03



EXTERIOR

P_03



BASE MODEL INSPIRATION*

Dimension 2200 x 2800 mm / **Materials** Sintered Stone Abu Dhabi White / Decorative tempered glass Dark Grey Gloss with 5-layer glass PIRNAR Grey II (black printed motif) / LABELUX **handle** 9209 with SmartLux illumination / **SecuroSmart** finger scanner with locking system ARMO COMFORT ELECTRO / **PVD** Copper Dusk

HORIZONTAL DIVISIONS

Up to a height of 3000 mm without divisions /
From 3001 to 3800 mm with divisions at 2300 mm /
From 3801 mm also with divisions at 3040 mm

**For detailed technical information, please contact our sales representative.*



SELECTED MODEL INSPIRATIONS



Dimension 2400 x 6000 mm / **Materials** Sintered Stone Zaha Stone / Aluminium FS 9005 (frame) / **Handle** OneTouch 9623 with SmartLux illumination / **SecuroSmart** finger scanner with locking system OMNIOLOCK / **PVD** Volcanic Shadow



Dimension 2400 x 5000 mm / **Material** Aluminium FS 9016 / **Handle** ANGULAR ALTUM with SmartLux illumination / Vertical Application / **SecuroSmart** finger scanner with locking system OMNIOLOCK / **PVD** Golden Honey



Dimension 1500 x 3400 mm / **Materials** Sintered Stone Iron Corten / Aluminium FS 7016 (frame) / **Double handle** ANGULAR 180 with SmartLux illumination / **SecuroSmart** finger scanner with locking system OMNIOLOCK / **PVD** Volcanic Shadow

PIRNAR PIVOT

INTERIOR

P_03



INTERIOR INSPIRATION

Materials Sintered Stone Arena / Aluminium colour FS 9005 / 5-layer glass
Pirnar Grey II / **Handle** Magnifica / **PVD** Copper Dusk (button & cylinder
base FS 9005)

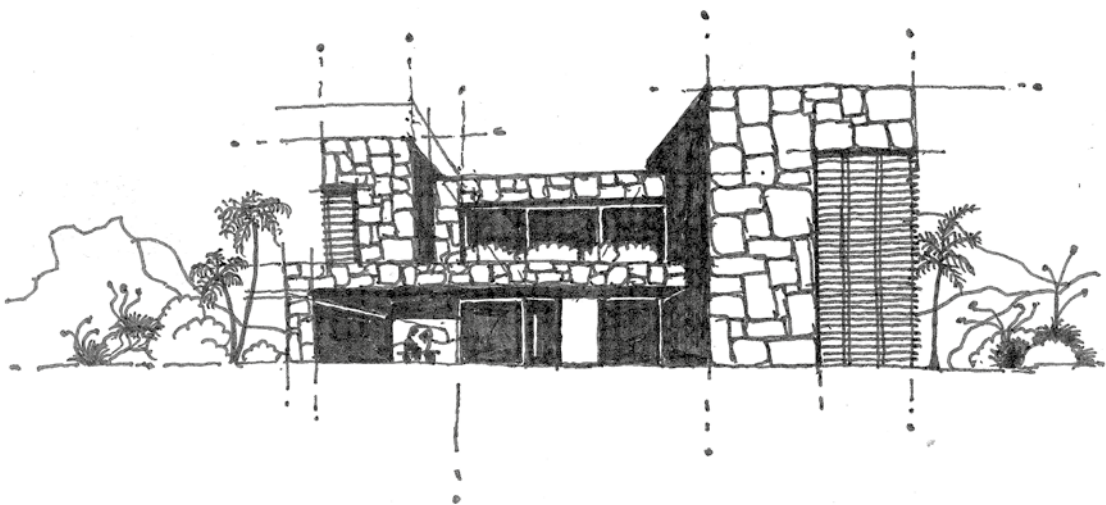




INSPIRATION

OLIVIA

IN THE SUN-DRENCHED LANDSCAPE,
vibrant blooms AND LUSH
GREENERY FILL THE AIR WITH FRAGRANCE,
softly caressing the shores
WHERE *land serenades*
the sea.







MODEL

P_04



EXTERIOR

P_04



BASE MODEL INSPIRATION*

Dimension 2400 x 2600 mm / **Materials** Sintered Stone Fusion Rapolano /
Decorative tempered glass Night Sky Gloss / **Handle** OneTouch 9623 with
SmartLux illumination / **SecuroSmart** finger scanner with locking system
ARMO COMFORT ELECTRO / **PVD** Volcanic Shadow

HORIZONTAL DIVISIONS

Up to a height of 3000 mm without divisions /
From 3001 to 3800 mm with divisions at 2300 mm /
From 3801 mm also with divisions at 3040 mm

**For detailed technical information, please contact our sales representative.*



SELECTED MODEL INSPIRATIONS



Dimension 2400 x 5410 mm / **Materials** Aluminium FS 9016 / Sintered Stone Calacatta Luxe / **Handle** ANGULAR ALTUM with SmartLux illumination / Vertical Application / **SecuroSmart** finger scanner with locking system OMNILOCK / **PVD** Volcanic Shadow



Dimension 2200 x 2500 mm / **Material** Decorative tempered glass Dark Grey Gloss with 5-layer glass Pirnar Grey II (black printed motif) / LABELUX **handle** 9209 with SmartLux illumination / **SecuroSmart** finger scanner with locking system ARMO COMFORT ELECTRO / **PVD** Copper Dusk



Dimension 1500 x 3200 mm / **Materials** Aluminium FS 9016 / Aluminium Dune FS Quartz 2 / **Double handle** ANGULAR 170 with SmartLux illumination / **SecuroSmart** finger scanner with locking system OMNILOCK / **PVD** Volcanic Shadow

PIRNAR PIVOT

INTERIOR

P_04



INTERIOR INSPIRATION

Material Aluminium with Dune colour FS 9016 / Secondary Colour FS Quartz 2 (frame) / **Handle** Magnifica / **PVD** Volcanic Shadow (button & cylinder base FS 9016)





INSPIRATION

CHLOÉ

WHERE LAVENDER FIELDS MEET
palatial elegance AND THE
SCENT OF CITRUS DANCES IN THE
BREEZE, *luxury unfolds* LIKE
A VIBRANT TAPESTRY, WOVEN WITH
whispers of elegance,
glamour, AND *timeless*
allure.







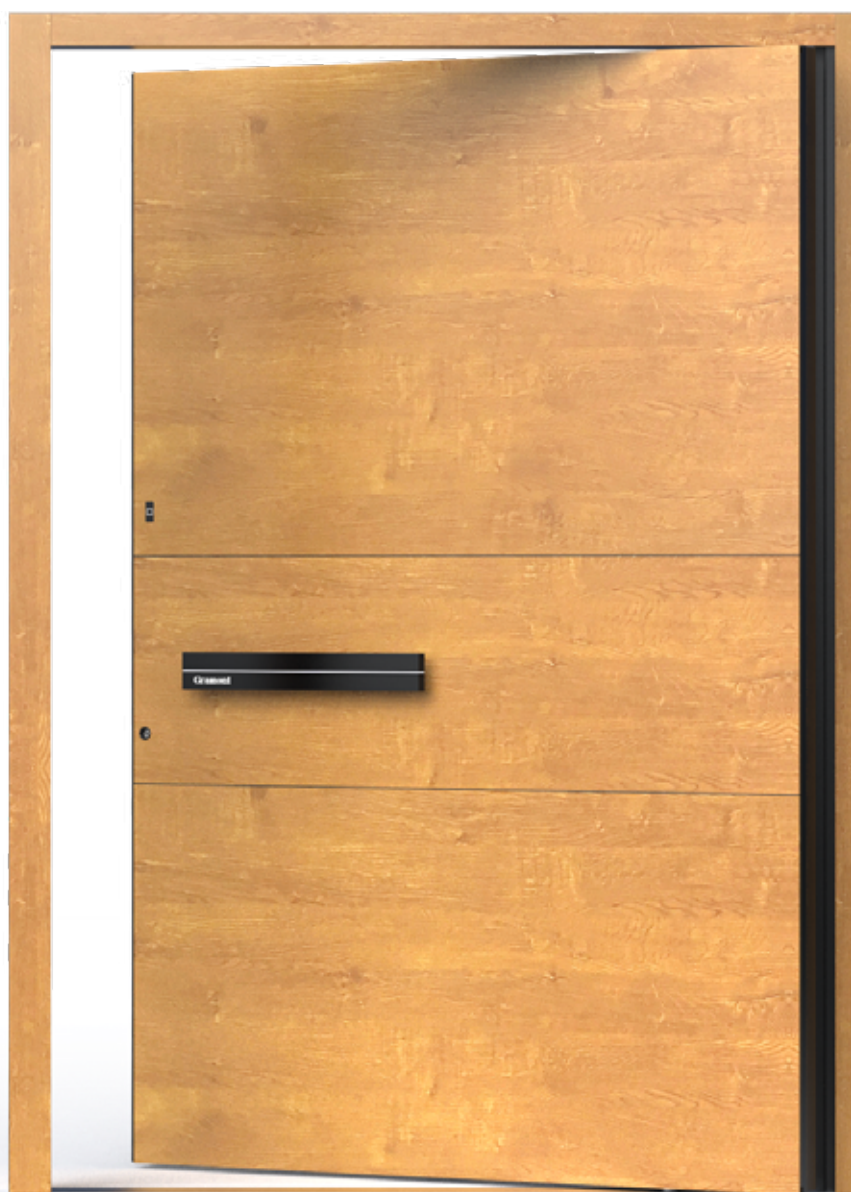
MODEL

P_05



EXTERIOR

P_05



BASE MODEL INSPIRATION*

Dimension 1800 x 2500 mm / **Material** Aluminium Wood imitation Oiled Oak decor / LABELUX **handle** 9209 with SmartLux illumination / **SecuroSmart** finger scanner with locking system ARMO COMFORT ELECTRO / **PVD** Volcanic Shadow

HORIZONTAL DIVISIONS

The first and second divisions from the bottom always at fixed heights of 850 mm and 1360 mm / Up to a door height of 2800 mm, without divisions / Above 2801 mm, divisions are at fixed heights of 850 mm / The top panel must not be smaller than 425 mm

**For detailed technical information, please contact our sales representative.*



SELECTED MODEL INSPIRATIONS



Dimension 2400 x 6000 mm / **Materials** Sintered Stone Rapolano / Decorative tempered glass Night Sky Gloss / **Double handle** ANGULAR 180 with SmartLux illumination / **SecuroSmart** finger scanner with locking system OMNILOCK / **PVD** Volcanic Shadow



Dimension 2400 x 5000 mm / **Material** Sintered Stone Calacatta Gold / **Handle** ANGULAR 115 with SmartLux illumination / Horizontal Application (2x) / **SecuroSmart** finger scanner with locking system OMNILOCK / **PVD** Mystic Bronze

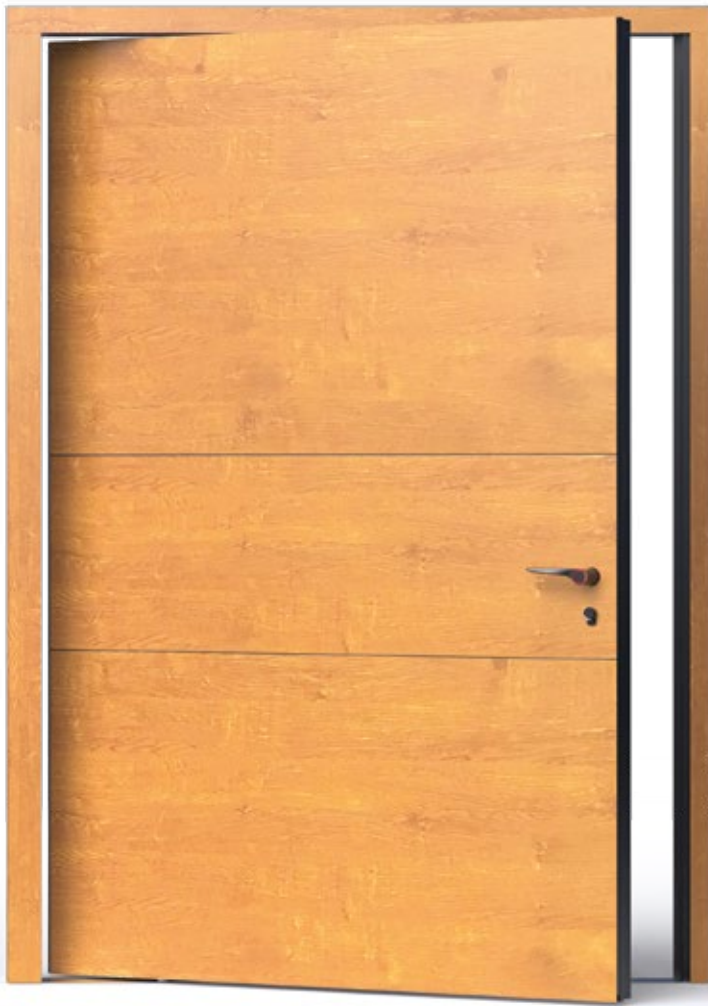


Dimension 1500 x 3600 mm / **Materials** Decorative tempered glass Night Sky Gloss / Aluminium Concrete imitation Decor / LABELUX **handle** 9209 with SmartLux illumination / **SecuroSmart** finger scanner with locking system OMNILOCK / **PVD** Volcanic Shadow

PIRNAR PIVOT

INTERIOR

P_05



INTERIOR INSPIRATION

Material Aluminium Wood imitation Oiled Oak decor / **Handle** Magnifica / **PVD** Volcanic Shadow (button & cylinder base FS 9005)

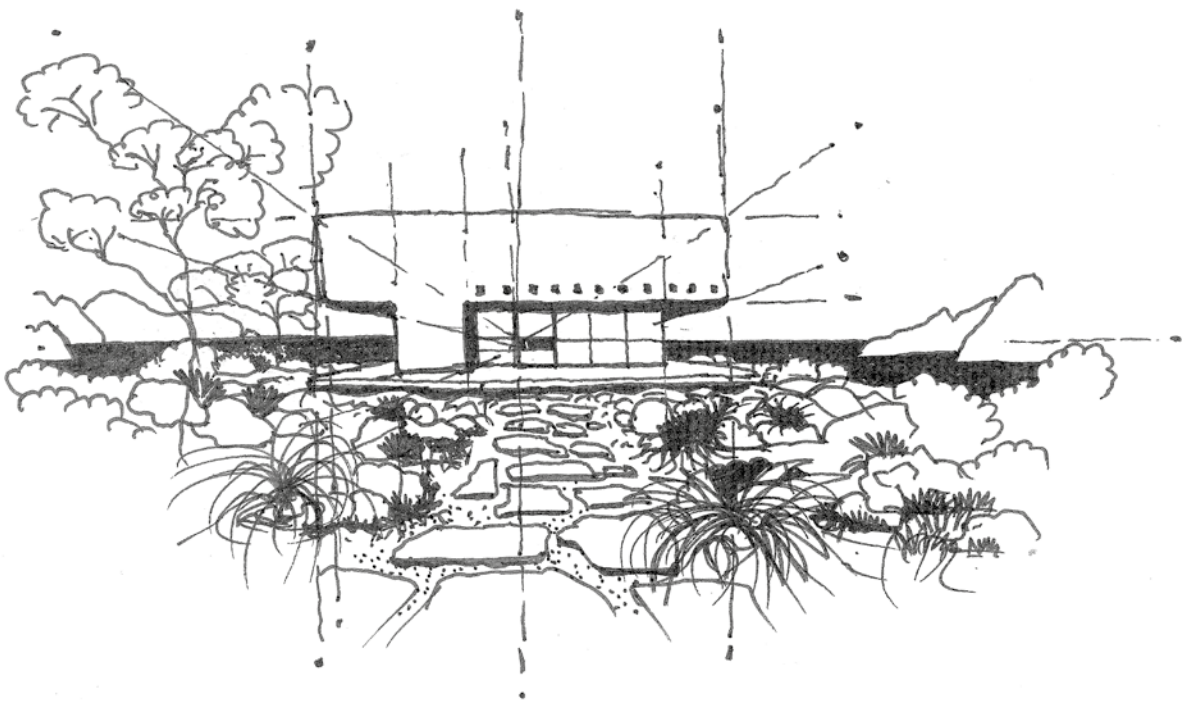




INSPIRATION

MAR

IN A SUNLIT REALM *elegance*
dances UPON THE WAVES AND
REFLECTS THE *shimmering*
embrace of the sea. THE
STEEP COAST LINE RISES NOBLY IN THE
BACKGROUND, FRAMING THE *exquisite*
tableau WHERE WATER AND PEAKS
CONVERGE, *whispering tales of*
grandeur IN EACH
GENTLE CREST.







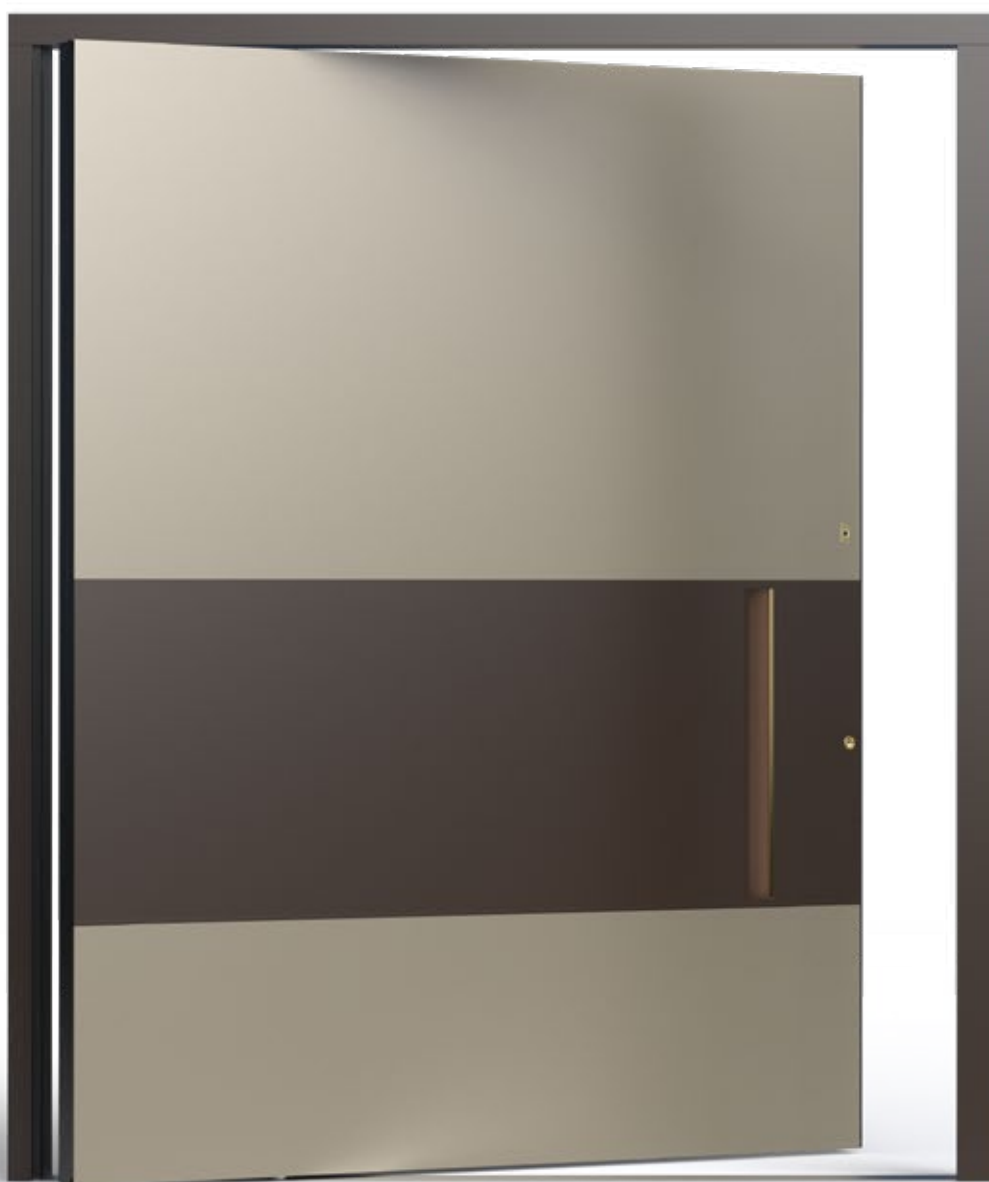
MODEL

P_06



EXTERIOR

P_06



BASE MODEL INSPIRATION*

Dimension 2200 x 2600 mm / **Material** Aluminium colour FS 8019 / Secondary colour FS Quartz 2 / **Recessed Handle** GRIP 9635 with SmartLux illumination / **SecuroSmart** finger scanner with locking system ARMO COMFORT ELECTRO / **PVD** Golden Honey

HORIZONTAL DIVISIONS

Two fixed points at the bottom, depending on the height of the door or handle.
Above the handle, evenly dynamic: Up to a door height of 2800 mm, no divisions /
From 2801 mm to 3500 mm, one division /
From 3501 mm to 4800 mm, two divisions /
For heights above 4801 mm, three divisions

**For detailed technical information, please contact our sales representative.*



SELECTED MODEL INSPIRATIONS



Dimension 2400 x 6000 mm / **Materials** Sintered Stone Calacatta Roma / Aluminium FS 7016 / **Recessed Handle** GRIP 9636 with SmartLux illumination / **SecuroSmart** finger scanner with locking system OMNILOCK / **PVD** Golden Honey



Dimension 2400 x 4400 mm / **Materials** Decorative tempered glass Night Sky Gloss / Aluminium FS Quartz 2 / **Recessed Handle** GRIP 9636 with SmartLux illumination / **SecuroSmart** finger scanner with locking system OMNILOCK / **PVD** Volcanic Shadow

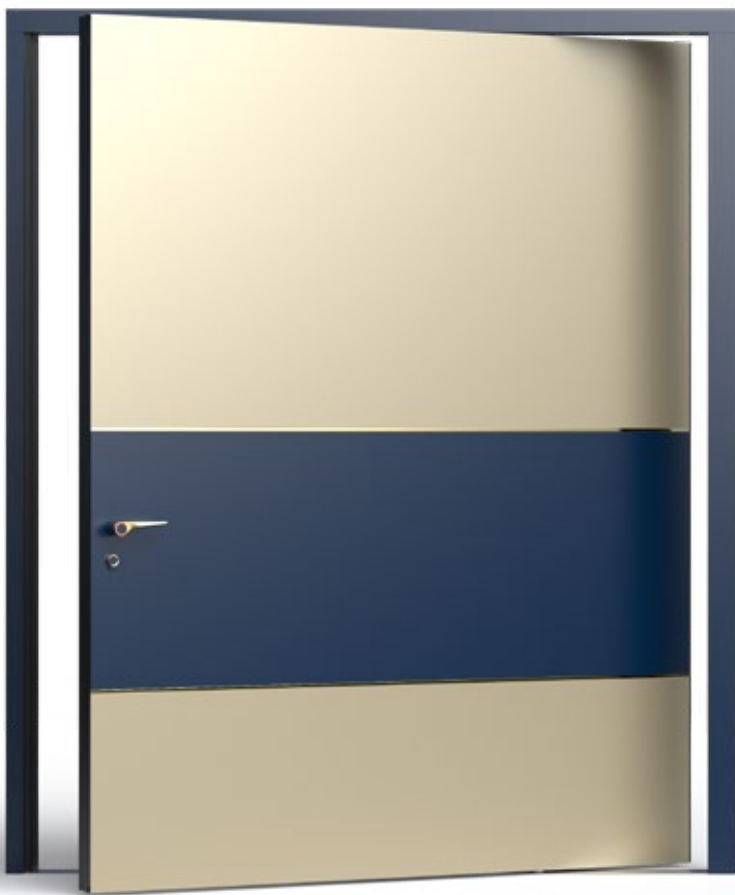


Dimension 1500 x 3300 mm / **Material** Aluminium 70105 / Secondary Colour 70161 / **Recessed Handle** GRIP 9635 with SmartLux illumination / **SecuroSmart** finger scanner with locking system OMNILOCK / **PVD** Volcanic Shadow

PIRNAR PIVOT

INTERIOR

P_06



INTERIOR INSPIRATION

Material Aluminium colour FS 5003 / Secondary Colour
FS Quartz 1 / **Handle** Magnifica / Horizontal Application (2x) /
PVD Golden Honey (button & cylinder base FS 5003)

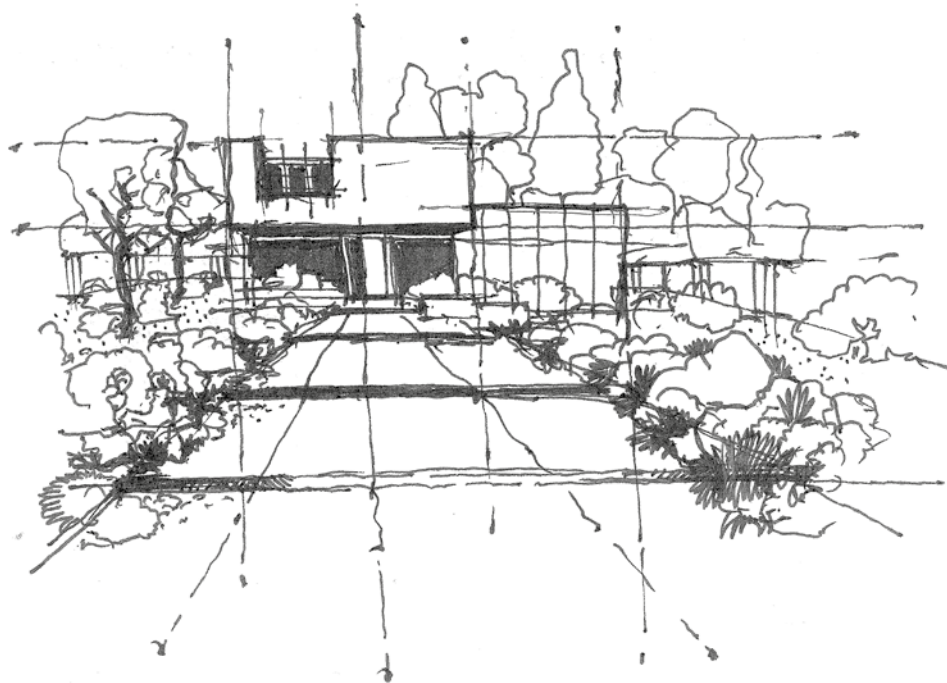




INSPIRATION

LORELAI

NESTLED IN LUSH WOODLANDS,
TRADITION HARMONIZES WITH *modern*
elegance. AS THE DAY UNFOLDS,
serene forests, WEAVING
SEAMLESSLY WITH *timber and*
stone, REFLECT A SENSE OF *peace*
and quiet CONTEMPLATION.







MODEL

P_07



EXTERIOR

P_07



BASE MODEL INSPIRATION*

Dimension 1800 x 2800 mm / **Materials** Decorative tempered glass Night Sky Gloss / Aluminium Dune colour FS 9005 / Vertical application (2x) / **Handle** ANGULAR ALTUM with SmartLux illumination / **SecuroSmart** finger scanner with locking system ARMO COMFORT ELECTRO / **PVD** Golden Honey

HORIZONTAL DIVISION

Up to a height of 3000 mm without divisions /
From 3001 to 3600 mm - 600 mm from the top /
Above 3601 mm at a height of 2960 mm

**For detailed technical information, please contact our sales representative.*



SELECTED MODEL INSPIRATIONS



Dimension 2400 x 5920 mm / **Materials** Decorative tempered glass Night Sky Gloss / Aluminium Dune FS Quartz 2 / **Handle** ANGULAR ALTUM with SmartLux illumination / **SecuroSmart** finger scanner with locking system OMNILOCK / **PVD** Volcanic Shadow



Dimension 2400 x 3100 mm / **Materials** Sintered Stone Black Obsession / Decorative tempered glass Dark Grey with 5-layer glass Pirnar Grey II (black printed motif) / Vertical Application (2x) / **Handle** ANGULAR ALTUM with SmartLux illumination / **SecuroSmart** finger scanner with locking system OMNILOCK / **PVD** Copper Dusk



Dimension 2200 x 4500 mm / **Material** Aluminium Concrete imitation Decor/ Vertical Application (2x) / **Handle** ANGULAR ALTUM with SmartLux illumination / **SecuroSmart** finger scanner with locking system OMNILOCK / **PVD** Mystic Bronze

PIRNAR PIVOT

INTERIOR

P_07



INTERIOR INSPIRATION

Material Aluminium Concrete imitation Decor / Decorative tempered glass Night Sky Gloss / Vertical application (2x) / **Handle** Magnifica / **PVD** Golden Honey (button & cylinder base FS 9005)





UNIQUE
CARBON CONSTRUCTION

CARBONCORE

A DOOR THAT SEALS
LIKE A WALL

CarbonCore is a unique carbon construction made exclusively for entrance doors. Carbon fibre is extremely lightweight, rigid and several times stronger than steel. CarbonCore profiles minimize door warping in extreme temperatures, whether it's scorching heat or freezing cold. This innovative construction enables advanced design and technological solutions for Pinar's entrance doors.



*Door-frame thickness: **129** mm

*Door-leaf thickness: **129** mm

Thermal glazing: 5-layer tempered

**Applies to the basic model, featuring a 4 mm exterior and 2,5 mm interior overlay thickness.*

The maximum total thickness is 135 mm (with 6 mm overlays on both the exterior and interior sides).



EXCEPTIONAL DIMENSIONS

Boasting extraordinary dimensions, Pirnar pivot doors span widths from 1350 mm to an astonishing 2400 mm and heights from 1990 mm to an impressive 6000 mm making it suitable for any architectural style, climate and environment.



LIMITLESS CUSTOM DESIGN

A breathtaking opening design that creates a sense of floating, enhancing width and spatial perception. Boundless personalization options featuring an extensive selection of materials, surface finishes, handcrafted details, and distinctive handles. Customizable SmartLux Lighting to elevate your entrance, creating a stylish and practical ambiance.



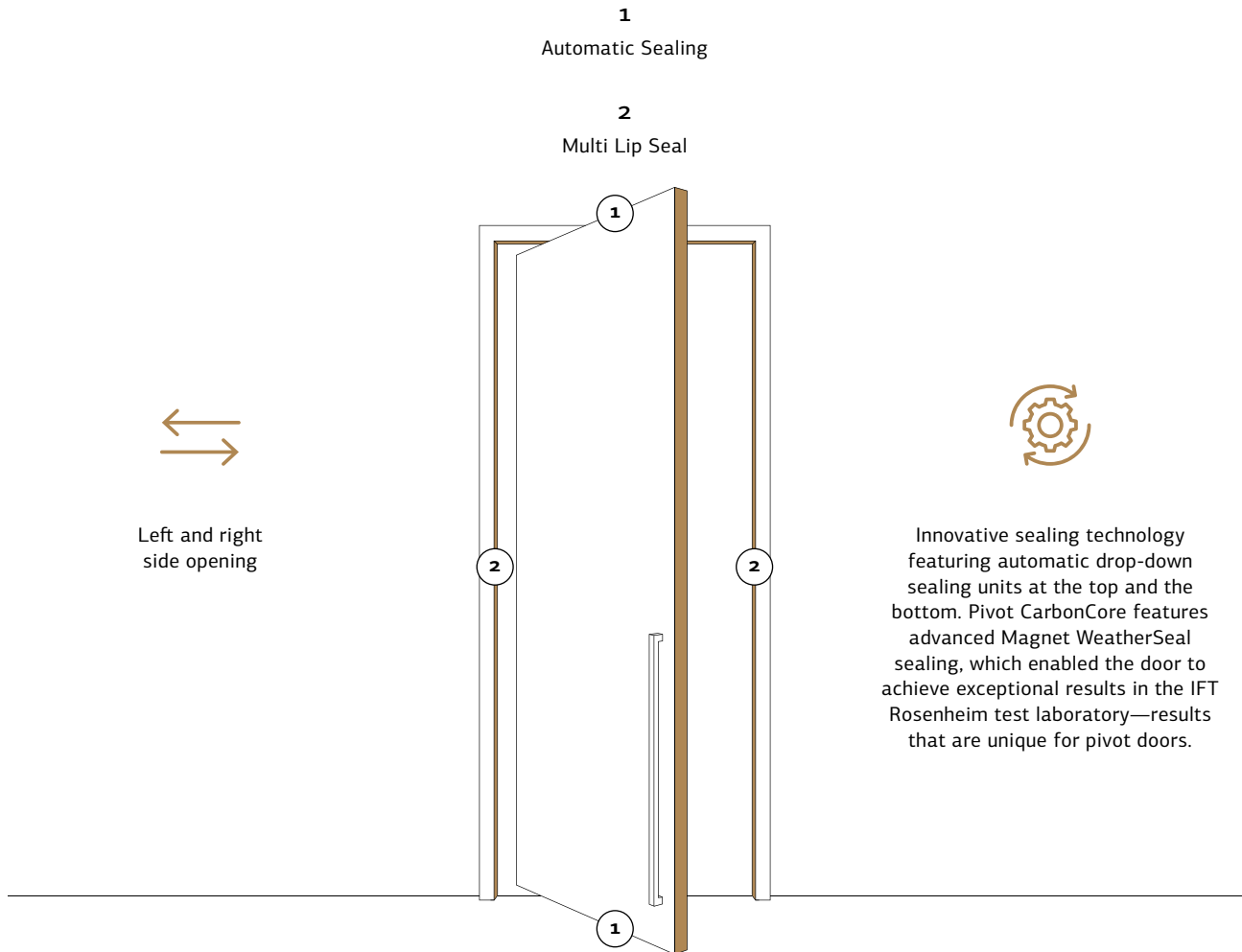
RECORD THERMAL INSULATION

Thanks to the unique CarbonCore construction, Pirnar pivot doors deliver exceptional thermal performance. Meticulously designed to thrive in diverse climatic, weather, and demographic contexts.

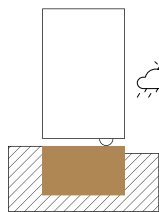
UNMATCHED SEALING

ENGINEERED FOR OPTIMAL PERFORMANCE
ACROSS ALL CLIMATES

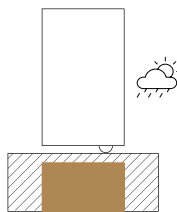
FOUR-SIDE CONTINUOUS SEALING



THRESHOLDS FOR VARIOUS CLIMATE CONDITIONS

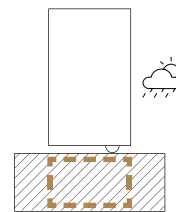


Visible threshold profile.
Protection against diverse weather conditions and rainwater.



Recessed threshold profile.*
Ideal for warmer climates.

*Not available for the EU.



No threshold profile.*
Continuous floor contact, ideal for warmer climates.

*Not available for the EU.

Unique sealing performance values*

Water tightness class:	9A
Air tightness class:	4
Wind load resistance:	C3

*Testing was conducted on pivot doors with a visible threshold up to a size of 2400 x 3150 mm.

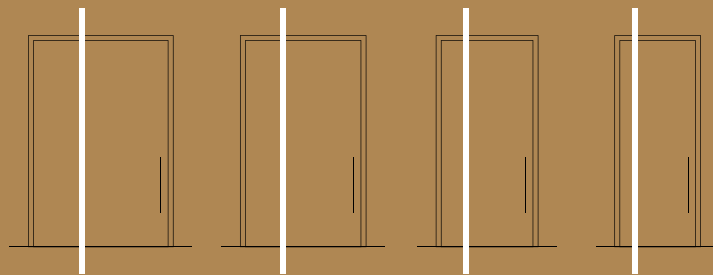
HIGH-PERFORMANCE

HEAVY DUTY HINGES

PERFECT ADJUSTABILITY FOR ANY PIRNAR
PIVOT DOOR

FLEXIBLE POSITIONING

The minimum distance from the hinge to the edge of the element is 350 mm and depends on the weight and width of the door leaf. Upon request, the hinge can be positioned closer to the center of the door leaf.

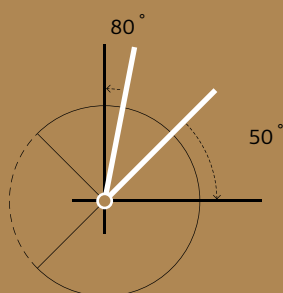


Pivoting points

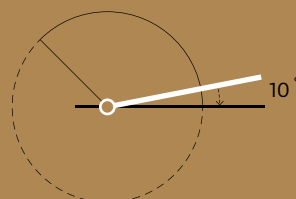
FUNCTION & MOVEMENT

Pirnar pivot concealed hinges offer optimal control over every part of the door movement.

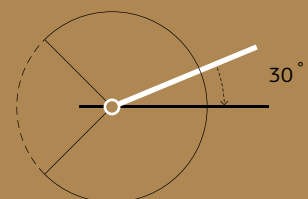
- Integrated self closing mechanism
- Integrated leaf hold position at 90°
- Adjustable speed, damper and latch control
- Adjustable leaf position up-down and left-right
- Maximal weight of door leaf up to 500 kg



Damper control



Latch control



Function

LIMITLESS
CUSTOMIZATION

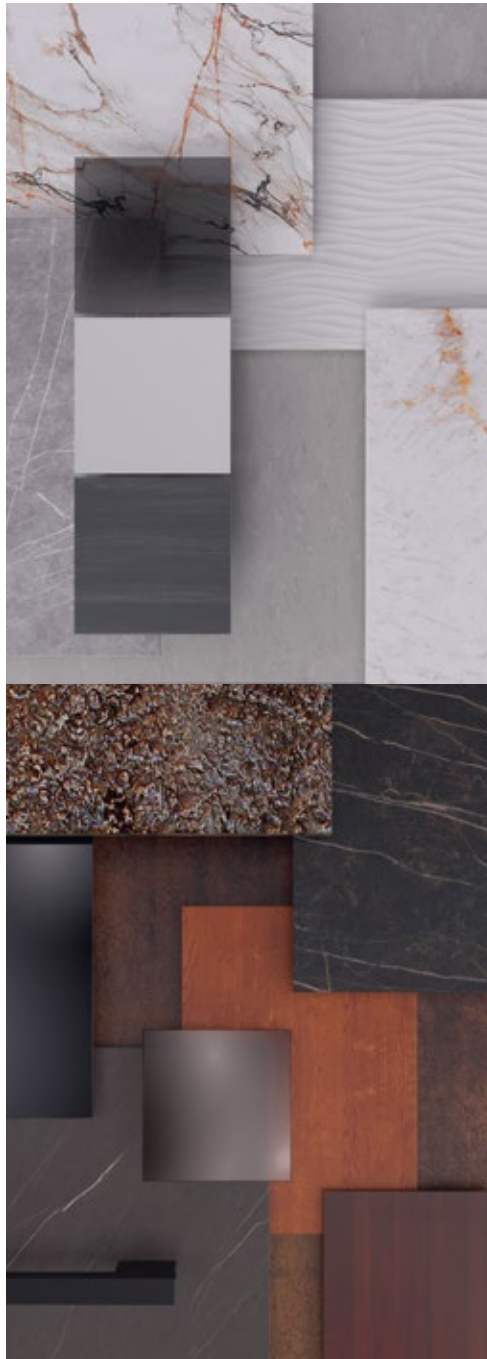
**MAKE IT
PERSONAL.
MAKE IT
YOURS.**



Pirnar Pivot offers an extraordinary canvas for personalization, featuring limitless customization options that bring the distinctive styles of homeowners to life. With an extensive selection of materials, finishes, coatings, and innovative accessories, these doors are perfectly suited to complement any architectural style while adapting to diverse climates and environments.

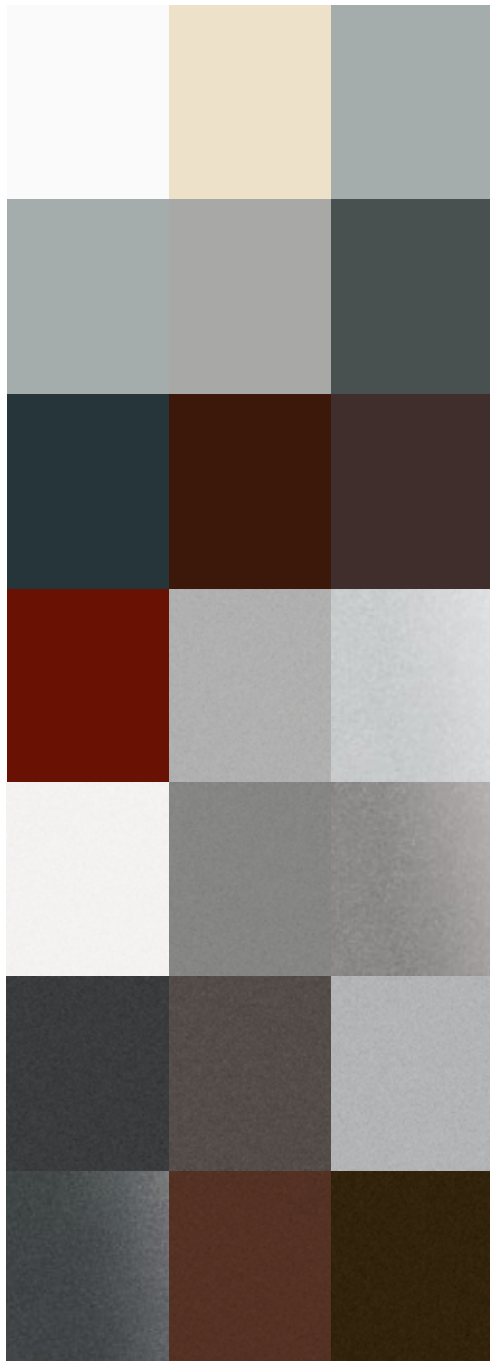


MATERIALS



Pirnar pivot doors present an extensive array of premium materials, colours, wood decors and other imitations, providing limitless design possibilities for discerning homeowners.

COLOURS



GET INSPIRED BY
MATERIALS AND COLOURS

LUXURIOUS
PVD COATINGS

Inspired by the beauty of luxurious jewellery, you can enhance selected accessories with a unique PVD coating. In the opulence of gold, bronze, black, and copper shades, or in stainless steel execution, every detail becomes a synonym for refined personal style. Pinar's PVD technology is also characterized by greater resistance to scratches, stains, and wear, longer colour durability, and an extended product lifespan.



**STAINLESS
STEEL**

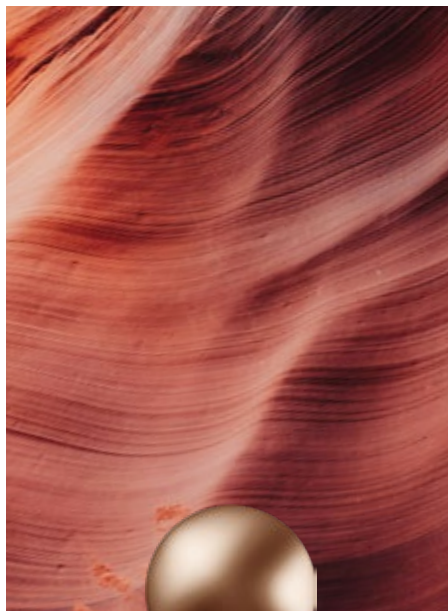
BASE



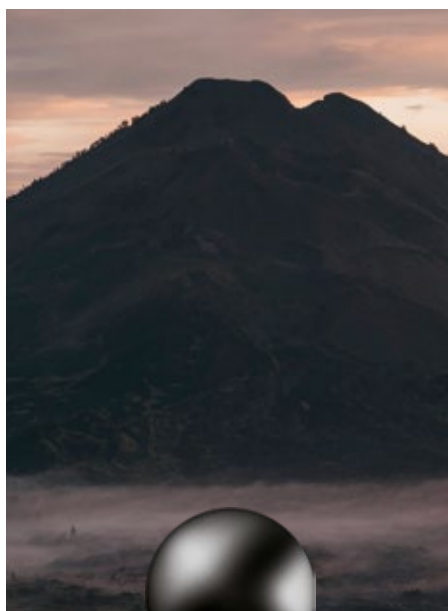
**GOLDEN
HONEY**



**COPPER
DUSK**



**MYSTIC
BRONZE**



**VOLCANIC
SHADOW**

GET
INSPIRED
BY PVD
COATINGS





GERMAN
DESIGN
AWARD
WINNER
2025

THE FIRST TOUCH OF HOME

MAGNIFICA

The stunning, internationally awarded interior handle is made of precision-cast stainless steel, ensuring its solidity and robustness. The refined ergonomic shape, inspired by the elegance of Pegasus' wing in flight, offers a light feeling of levity and a comfortable grip.



1

An exclusive unique mechanism that derives directly from the door ensures superior stability and extended lifespan.

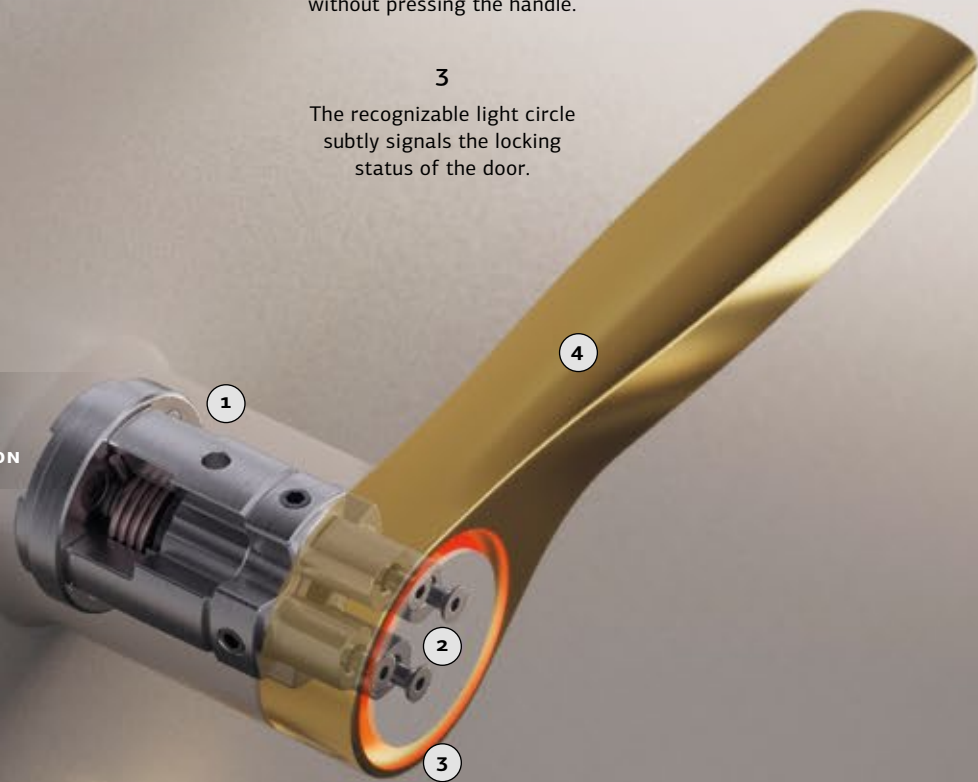
2

The button within the light circle allows for door opening without pressing the handle.

3

The recognizable light circle subtly signals the locking status of the door.

UNIQUE
PIRNAR
INNOVATION



4

4

The appearance of the handle can be enhanced with various colour shades in PVD coating.

5

Locking the door:
the cylindrical button is pulled out and turned counterclockwise.

6

Unlocking the door:
the cylindrical button is pulled out and turned clockwise.



WATCH THE VIDEO
ABOUT **MAGNIFICA**

SMART
LUX

CREATING AMBIANCE WITH
ELEGANT LIGHTING



Pirnar's solutions for creating a comfortable atmosphere facilitate the management of lighting for Pivot entrance doors at pull handles, lever handles or nameplate and is available only as a package. With the SmartLux system in the Pirnar mobile app, you can adjust the intensity, temperature, and timing of the lighting.

EASE OF USE
AND COMPATIBILITY WITH
SMART HOME SOLUTIONS



Wi-Fi and Bluetooth connectivity



Remote management



Temperature control of led light intensity
from 2700 Kelvin (warm white) to 6500 Kelvin (cool
white)



Time setting for LED lighting



Voice control with integration of Google
Assistant and Amazon Alexa

LIVE SMARTER AND SAFER

COMPLETE SECURITY AND COMFORT

Pirnar offers state-of-the-art solutions and the finest products for complete security and comfort. You can unlock the entrance doors using the smart SecuroSmart system or the SecuroSmart Keypad in the Pirnar mobile app, as well as with a finger scanner, card, PIN code, Google Assistant or Alexa. Combined with the premium locking system Omnilock or Armo Comfort Electro, you will ensure that your home is a fortress of safety and peace.



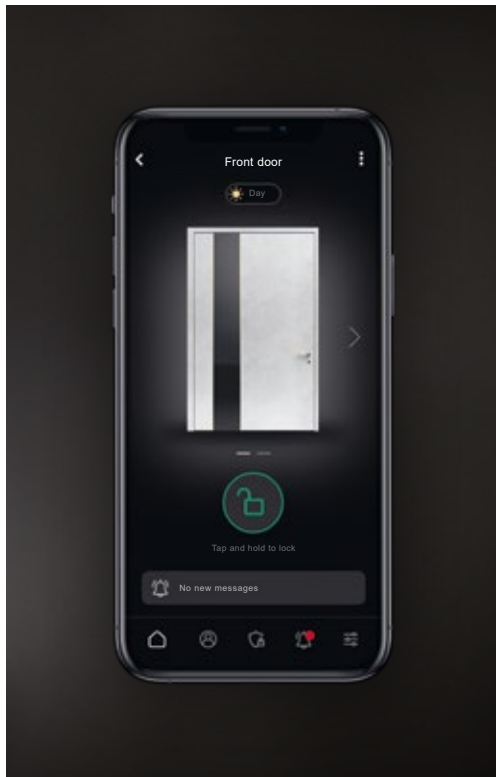
FINGER SCANNER

This modern and popular method of unlocking doors with a finger scanner ensures enhanced security and, above all, a simpler and more comfortable entry for your entire family, as you can store fingerprints of multiple selected individuals simultaneously. Forget about keys and concerns.



SECUROSMART KEYPAD

The modern keypad allows for unlocking with various PIN codes tailored to specific needs and unlocking with an NFC card. It features a finger scanner and integrated and wireless doorbell, managed via the Pirnar app.



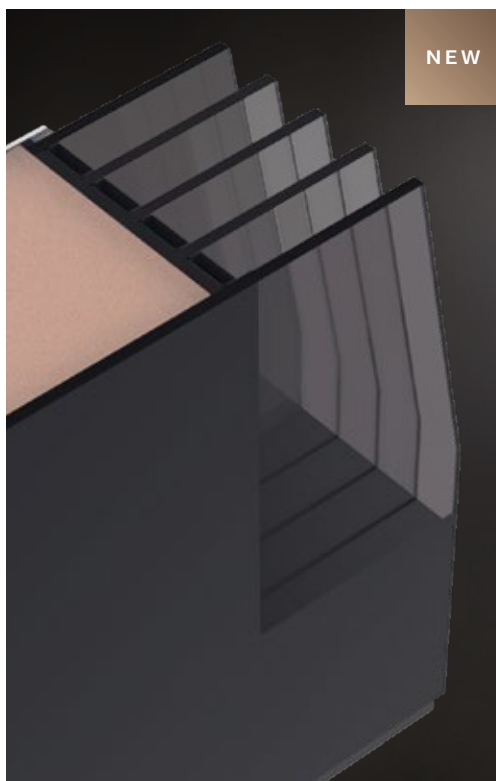
SMART MANAGEMENT SECUROSMART

The SecuroSmart system in the Pirnar mobile application boasts outstanding functionalities for easy and secure door usage. Even if you are on the other side of the world, you can conveniently unlock your doors.



CONCEALED HINGES

Heavy-duty hinges represent an important security feature of Pirnar's pivot doors, celebrated for their remarkable strength and durability. Beyond their elegant design, these hinges remain inaccessible from the exterior, enhancing overall safety and integrity.



5-LAYER TEMPERED GLAZING

Featuring 6 mm tempered insulating glass, our 5-layer tempered glazing offers superior strength and security, ensuring enhanced protection while maintaining aesthetic elegance in every pivot door design.



LOCKING SYSTEMS OMNILOCK AND ARMO COMFORT ELECTRO

Pirnar pivot doors feature state-of-the-art locking systems for security and convenience. Doors up to 3 m use the Armo Comfort Electro lock with motorized, keyless unlocking and automatic locking.

For doors above 3 m, the 3-point locking system OmniLock is available as an upgrade with up to 6 locking points on each side, 12 locking points together. Both systems provide enhanced protection with burglary resistance class RC2*, delivering superior safeguarding and peace of mind.

*The RC2 package is standardly available for a solid door leaf, without insulating glass in the door leaf. For designs with insulating glass in the door leaf, the RC2 package is available as an additional option.



PIRNAR

DISCLAIMER

Pirnar pivot door models are protected by copyright and remain the exclusive property of Pirnar. We reserve the right to modify prices, make design or dimensional adjustments, and implement minor technological improvements without prior notice, as part of our commitment to continuous product development.

Please note that catalogue images, dimensions, finishes, features (functions/options), and colours may differ from the final product due to printing limitations. For precise colour and material selection, we recommend consulting original colour samples or material swatches.

Pirnar is not responsible for the design, dimensioning, or installation of structural supports used when integrating doors into façade systems. We do not produce or supply the supporting framework (e.g. mullions, transoms, or structural grids) into which doors, sidelights, or other elements are mounted. Our responsibility is limited strictly to the entrance door itself.

Edition 01/2025



PIRNAR.

Pirnar d.o.o.
Bravničarjeva ulica 20
SI-1000 Ljubljana, Slovenia
T +386 1 563 39 02
E sales@pirnar.si
www.pirnar.co.uk

